



*"Home of Innovative & Quality
Solutions for Construction
since 1984"*

BUILDING SOLUTIONS

BALLUSTER

LINTEL

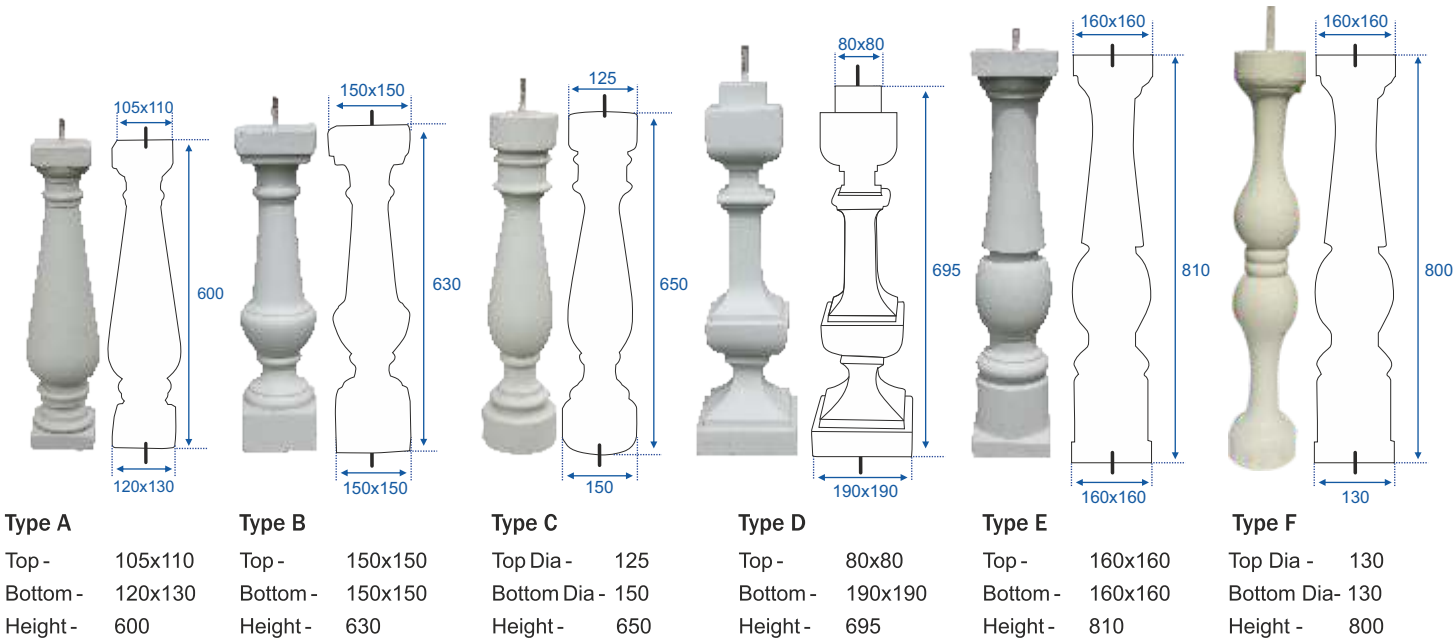
**BIRD
SPIKE**

LETTERBOX

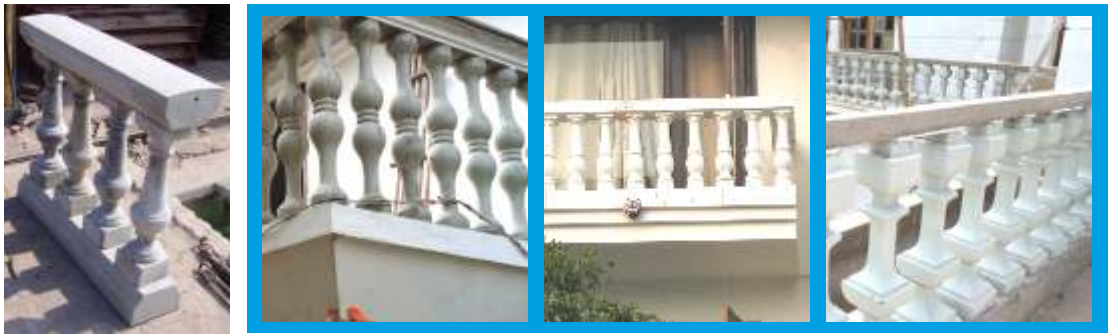


BALLUSTER

A key architectural feature on many apartments and buildings, ballusters add to the character of the building.



Ballusters can also be provided with optional top and bottom rails



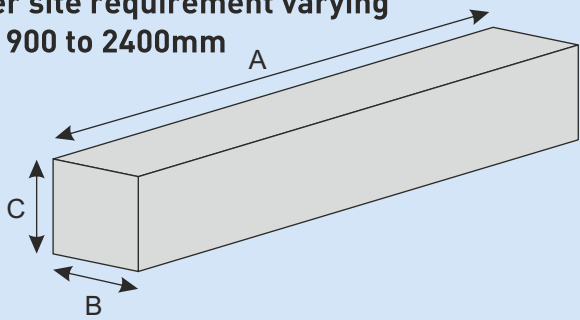


LINTEL BEAMS

We provide lintel beams for doors and windows of varying sizes. These lintel beams have been properly load tested for the span.

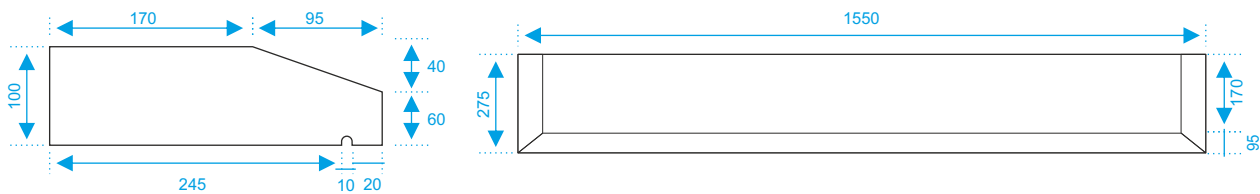


As per site requirement varying from 900 to 2400mm



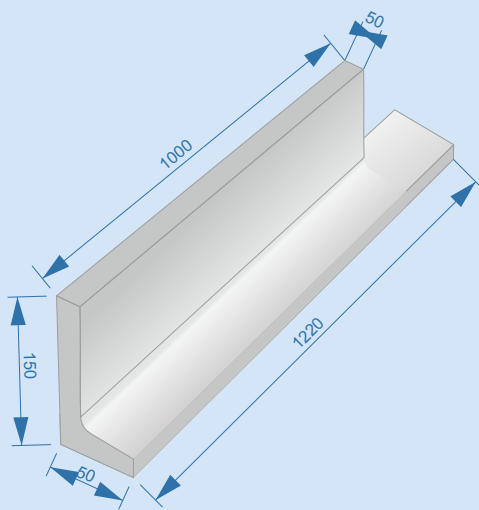
Product Code	A	B	C
LINT - A	1200	112.5/100	150
LINT - B	1400	112.5/100	150
LINT - C	1600	112.5/100	150
LINT - D	1800	112.5/100	150
LINT - E	2000	112.5/100	150
LINT - F	2400	112.5/100	150

WINDOW SILL



Use of standardized lintel beams and window sills accelerates the construction process thus reducing project cost.

STAIR





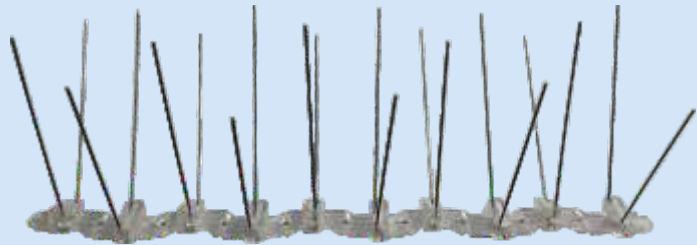
BIRD SPIKE

PRODUCT OPTIONS

Polycarbonate Bird Spike



Stainless Steel Bird Spike



TECHNICAL INFORMATION

- | | |
|---|--|
| <ul style="list-style-type: none">• Overall dimensions : 13" long, 6" wide, 5" high & covers upto 7" surface width.• Material : Polycarbonate• Each spike consists of 20 flat tipped points.• Provided with 1" wide 3m double side tape for easy & lasting installation. | <ul style="list-style-type: none">• Overall dimensions : 13" long, 6" wide, 5" high & covers upto 7" surface width.• Material : SS - 304• Each spike consists of 20 flat tipped points.• Provided with 1" wide 3m double side tape for easy & lasting installation. |
|---|--|

INSTALLATION

1. Clean the surface on which the spikes have to be installed thoroughly. There should not be any loose material.
2. Mark the area where the spikes will be installed. Keep the gap between two adjacent rows to a maximum of 7 inches.
3. Peel off the (Plastic) backing sheet from the bottom of the spike and push down firmly over the area marked in step 2. Make sure that you overhang the first strip about 1/2 inch at the end of the surface.
4. Install the next strip flush with the first strip. Use the alignment notch at the end of the strips for proper alignment. Do not leave gaps between the strip. Use the quick part seam to make adjustments to the length
5. Allow the spikes undisturbed for about an hour for initial settlement.

